

It all hinges on excellence.

**SIMONSWERK**

# ANSELMI

The concealed hinge system  
for residential doors



# Content

## ANSELM – The concealed hinge system for residential doors

---

### Model versions for doors with low profile hinge frame part

11	<b>AN 170 3D</b>	up to 60 kg (132 lbs.)		minimum door thickness of 34 mm (1-3/8")
12	<b>AN 172 3D</b>	up to 60 kg (132 lbs.)		minimum door thickness of 38 mm (1-1/2")

---

### Model versions for doors with recessed frame facings up to 14mm (0.551")

15	<b>AN 161 3D FVZ 14/40</b>	up to 60 kg (132 lbs.)	with 14 mm recessed frame facings	minimum door thickness of 40 mm (1-37/64")
----	----------------------------	---------------------------	--------------------------------------	---

---

### Model versions with integrated closing function

19	<b>AN 108 3D SC45 Kit</b>	closing power 45 kg (99 lbs.)	integrated damping function	minimum door thickness of 34 mm (1-3/8")
----	---------------------------	----------------------------------	--------------------------------	---

---

20	<b>Fixing Plate</b>			
----	---------------------	--	--	--

---

21	<b>Routing data</b>			
----	---------------------	--	--	--

---

23	<b>Application accessories</b>			
----	--------------------------------	--	--	--

---

25	<b>Accessories</b>			
----	--------------------	--	--	--

---

26	<b>Finishes</b>			
----	-----------------	--	--	--

---

27	<b>Service</b>			
----	----------------	--	--	--

---

# ANSELM

## The concealed hinge system for residential doors

The ANSELM product range offers high quality concealed hinge systems suitable for residential interior doors. In combination with a contemporary door design, this economical product range supports modern, inspiring aesthetics without sacrificing quality.

The three dimensional adjustment feature provides a simple way to create a perfect margin between the door and the frame. This enables the door to be adjusted in three dimensions (horizontal, vertical and in/out). With the maintenance free slide bearing, this hinge system offers not only a clean look but also solid functionality.



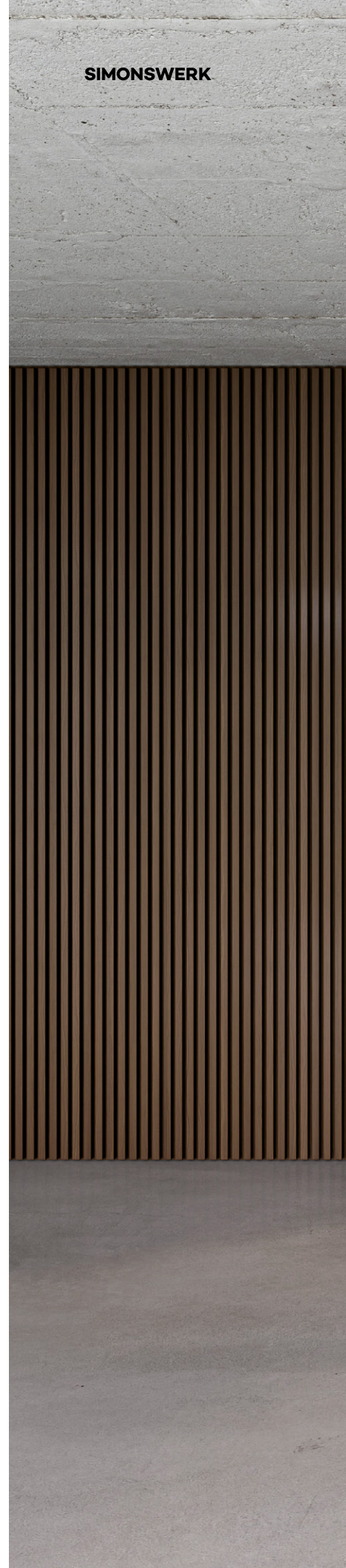


## Design meets function with models for special applications

ANSELM provides a variety of models tailored to specific design needs. Particularly suited for minimalistic design, which plays a significant role in modern architecture with its clean lines and understated aesthetics.

The ANSELM FVZ model allows the frame to be hidden and door to be flush with wall surfaces by using a recessed frame up to 14mm (0.551").

The ANSELM SC self-closing hinge system enhances convenience by incorporating a damper that ensures the door closes smoothly and steadily. This system, hidden within the hinge, maintains a clean and sophisticated appearance of the door. The closing force can be easily adjusted from the front, even after installation, to cater to individual requirements and can be fine-tuned as needed.













## A comprehensive design range with 5 finishes

The ANSELM product brand offers hinge systems in five appealing finishes, providing versatility for various uses. These hinges can be matched with the architectural design and integrated components to achieve a cohesive look. When closed, they seamlessly blend in with the background; however, when the door is open, they add striking accents.

ANSELM provides a variety of attractive hinge finishes to elevate the look of any interior door, offering top-quality and impeccable finishes.



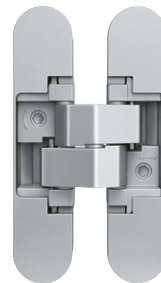
Black  
(AN 018)



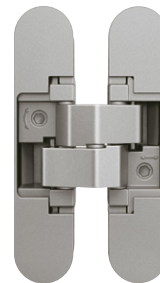
Rustic Umber  
(AN 012)



RAL 9016  
Traffic White  
(AN 049)



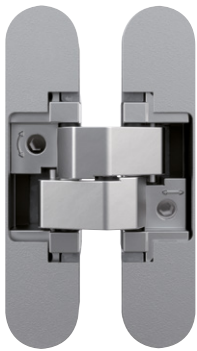
Aluminum Chrome  
(AN 036)



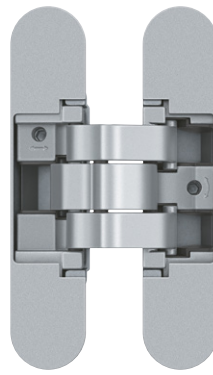
Satin Nickel Coated  
(AN 044)

## Product Overview

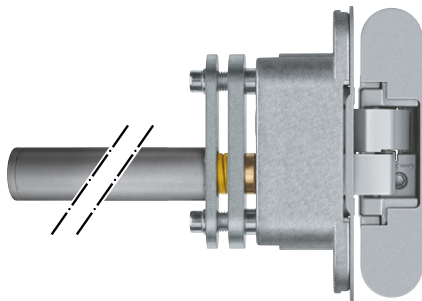
The ANSELMI range offers concealed hinge systems for interior residential doors up to 60 kg (132 lbs.)



Model versions for residential doors up to 60 kg (132 lbs.)



Model versions for doors with recessed frame facings up to 14 mm (0.551") thick. Minimum door panel thickness of 40 mm (1.57").



Model versions with integrated closing function





## Model versions for doors with reduced frame milling

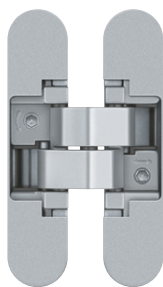
- low profile frame part
- versions for aluminum framed doors
- load capacities up to 60 kg (132 lbs.)
- opening angle 180°



## ANSEMI

### AN 170 3D

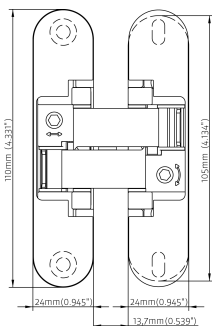
for residential doors with a thickness of 34-45 mm (1.33"-1.77") with 21 mm (0.83") low profile frame part up to 60 kg (132 lbs.)



hinge	<b>21 mm (0.83") hinge frame part</b>	<b>up to 60 kg (132 lbs.)</b>
-------	---------------------------------------	-------------------------------

#### Product features

- low profile frame part 21 mm (0.83")
- minimum door thickness of 34 mm (1.33")
- completely concealed hinge system
- for wood and aluminum frames
- for residential doors
- 3D adjustable (side +/- 1.5 mm (0.059"), height +/- 2.5 mm (0.098"), compression +/- 1.0 mm (0.039"))
- material Zinc Diecast



#### Technical details

load capacity	<b>i</b> (900x2100 mm) (35.43" x 82.68")	60 kg (132 lbs.)
overall length		110 mm (4.33")
width (frame)		24 mm (0.94")
width (door)		24 mm (0.94")
cutter diameter		12.7 mm (1/2")
collar ring diameter		25.4 mm (1")
opening angle		180°

#### Finish

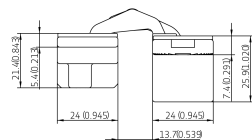
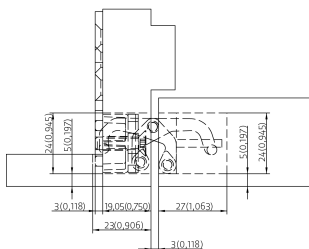
Rustic Umber (AN 012), Black (AN 018), Aluminum Chrome (AN 036), Satin Nickel Coated (AN 044), RAL 9016 Traffic White (AN 049)

#### Combination

fixing plate	casing frame	AN 140 3D FZ
--------------	--------------	--------------

#### Note

**i** The load capacity mentioned above refers to the use of 2 hinges per door leaf (900 x 2100 mm) (35.43" x 82.68"). Wood screws are included.



## ANSELMI

### AN 172 3D

for residential doors with a thickness of 38-45 mm (1.49"-1.77") with 21 mm (0.82") low profile frame part up to 60 kg (132lbs.) and claddings up to 4 mm (0.15")

hinge	21 mm (0.82") hinge frame part	up to 60 kg (132lbs.)
-------	--------------------------------	-----------------------

#### Product features

- low profile frame part 21 mm (0.82")
- minimum door thickness of 38 mm (1.496")
- possible installation of claddings up to 4 mm (0.157")
- completely concealed hinge system
- for wood and aluminum frames
- for residential doors
- 3D adjustable (side +/- 1.5 mm (0.059"), height +/- 2.5 mm (0.098"), compression +/- 1.0 mm (0.039"))
- material Zinc Diecast

#### Technical details

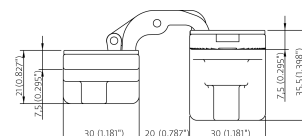
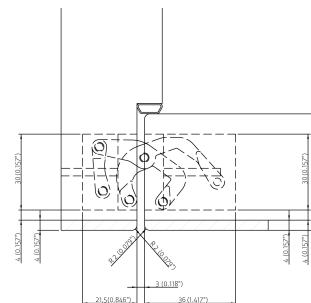
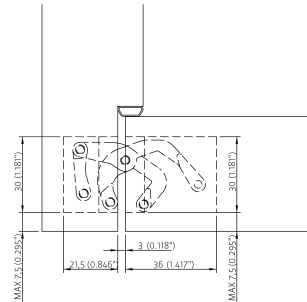
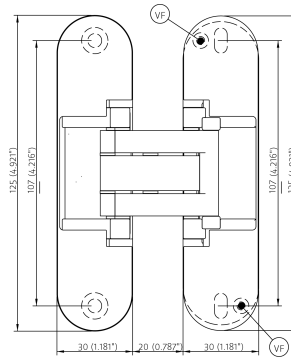
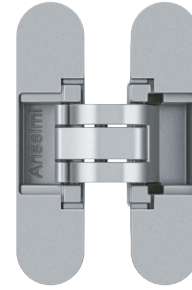
load capacity	<b>i</b> (900x2100 mm) (35.43" x 82.68")	60 kg (132 lbs.)
overall length		125 mm (4.92")
width (frame)		30 mm (1.18")
width (door)		30 mm (1.18")
cutter diameter		12.7 mm (1/2")
collar ring diameter		25.4 mm (1")
opening angle		180°

#### Finish

Rustic Umber (AN 012), Black (AN 018), Aluminum Chrome (AN 036), Satin Nickel Coated (AN 044), RAL 9016 Traffic White (AN 049)

#### Note

**i** The load capacity mentioned above refers to the use of 2 hinges per door leaf (900 x 2100 mm) (35.43" x 82.68"). Wood screws are included.







## Model versions for doors with recessed frame facings

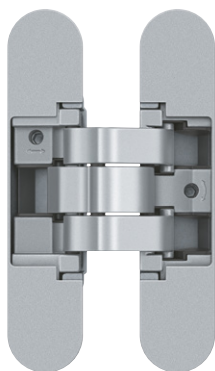
- up to 14 mm (0.63") recessed frame facings
- minimum door thicknesses of 40 mm ( 1.57")
- load capacities up to 60 kg (132 lbs.)
- opening angle 180°



## ANSELMI

### AN 161 3D FVZ 14/40

for 40 mm (1.57") thick residential doors up to 14 mm (0.55") recessed frame facings up to 60 kg (132 lbs.)



hinge	recessed frame facings	up to 60 kg (132 lbs.)
-------	------------------------	------------------------

#### Product features

- FVZ = recessed frame facings
- recessed frame facings up to 14 mm (0.551")
- minimum door thickness of 40 mm (1.57")
- completely concealed hinge system
- for wood and aluminum frames
- for residential doors
- 3D adjustable (side +/- 1.5 mm (0.059"), height +/- 2.5 mm (0.098"),  
compression +/- 1.0 mm (0.039"))
- central installation
- material Zinc Diecast

#### Technical details

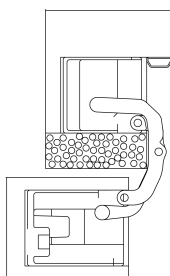
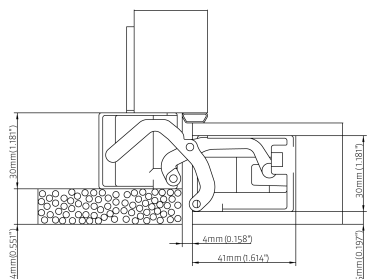
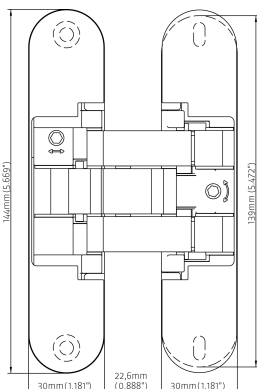
load capacity	<b>i</b> (900x2100 mm) (35.43" x 82.68")	60 kg (132 lbs.)
overall length		144 mm (5.66")
width (frame)		30 mm (1.18")
width (door)		30 mm (1.18")
cutter diameter		12.7 mm (1/2")
collar ring diameter		25.4 mm (1")
opening angle		180°

#### Finish

Rustic Umber (AN 012), Black (AN 018), Aluminum Chrome (AN 036),  
Satin Nickel Coated (AN 044), RAL 9016 Traffic White (AN 049)

#### Note

**i** The load capacity mentioned above refers to the use of 2 hinges per door leaf (900 x 2100 mm) (35.43" x 82.68"). Wood screws are included.









## Model versions with integrated closing function

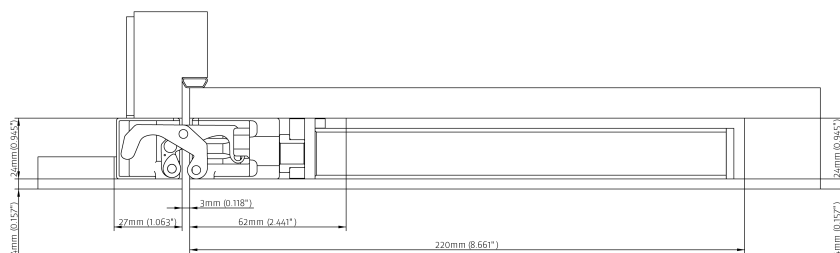
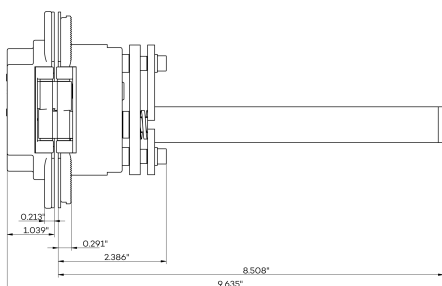
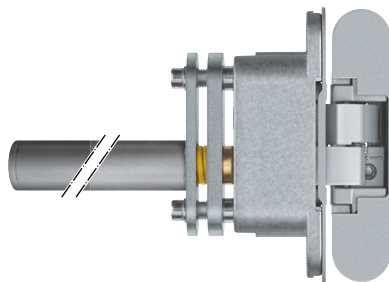
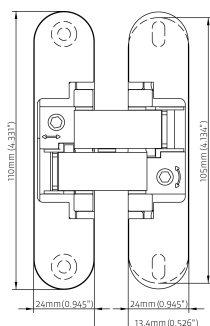
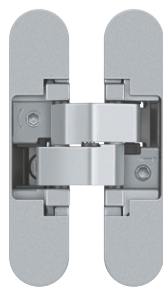
- self closing hinge system
- version with integrated damping function
- closing speed for door panel weight up to 45 kg (99 lbs.)
- adjustable closing speed when door is installed



## ANSEMI

### AN 108 3D SC45 Kit

with integrated self closing and damping function for residential doors



hinge		up to 45 kg (99 lbs.)
-------	--	-----------------------

#### Product features

- self closing hinge system with integrated damping function
- closing power up to 45 kg (99 lbs.)
- completely concealed hinge system
- for wood and aluminum frames
- for residential doors
- closing speed can be adjusted after door has been installed
- 3D adjustable (side +/- 1.5 mm (0.059"), height +/- 2.5 mm (0.098"), compression +/- 1.0 mm (0.039"))
- material Zinc Diecast/steel

#### Technical details

overall length	<b>i</b> (900x2100 mm) (35.43" x 82.68")	110 mm (4.33")
width (frame part)		24 mm (0.94")
width (door part)		24 mm (0.94")
cutter diameter		12.7 mm (1/2")
collar ring diameter		25.4 mm (1")
opening angle		180 °
closing angle		approx. 90 °

#### Finish

Rustic Umber (AN 012), Black (AN 018), Aluminum Chrome (AN 036), Satin Nickel Coated (AN 044), RAL 9016 Traffic White (AN 049)

#### Combination

hinge		AN 160 3D
fixing plate	casing frame	AN 140 3D FZ

#### Note

**i** The closing power mentioned above refers to the use of one self closing hinge per door leaf (900 x 2100 mm) (35.43" x 82.68").

The self closing hinge has to be used only in combination with two AN 1603D hinges (top and bottom) and has to be installed at center of the door leaf.

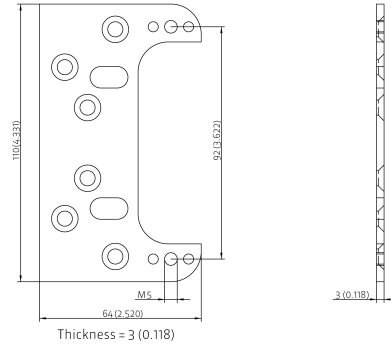
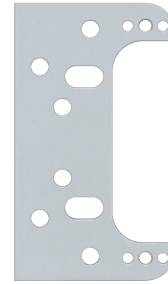
Kit includes: 2 AN 160 3D hinges and 1 AN 108 SC45

# ANSELMI

## AN 140 3D FZ

for unrebated residential doors with casing frames

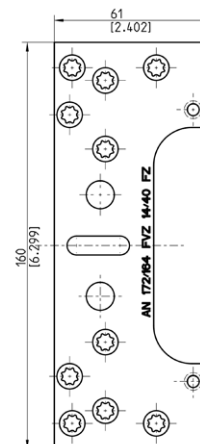
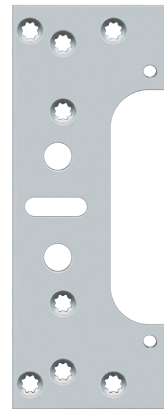
<b>hinge</b>	
<b>Combination</b>	AN 160 3D AN 170 3D AN 108 3D SC45



## AN 172 3D FZ

for unrebated residential doors with casing frames

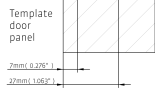
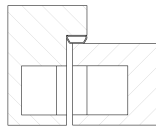
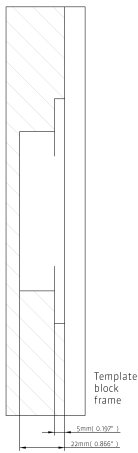
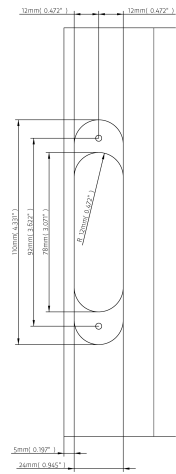
<b>hinge</b>	
<b>Combination</b>	AN 172 3D



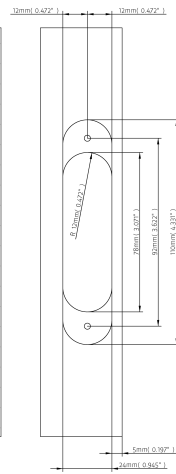


# Routing data

Milling frame



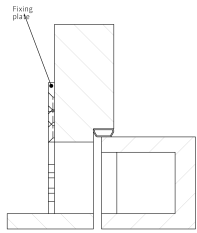
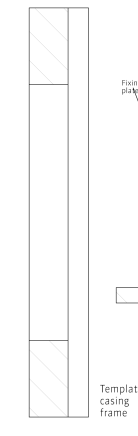
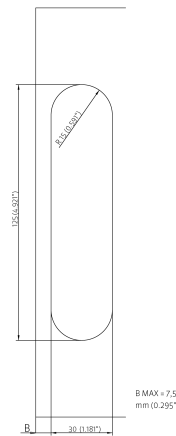
Milling door



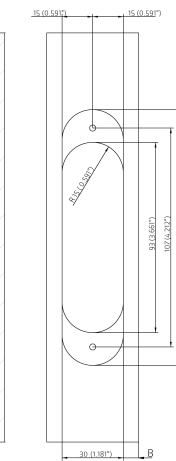
## AN 170 3D

Preform routing with 1/2" cutter and 1" collar ring

Milling frame



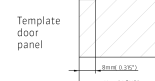
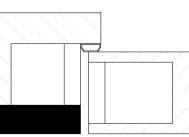
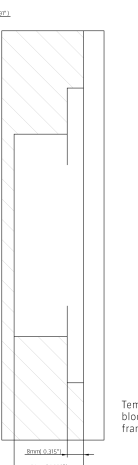
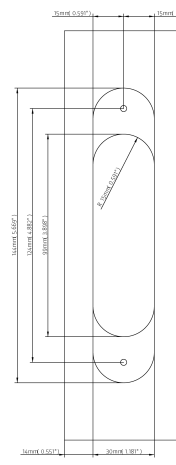
Milling door



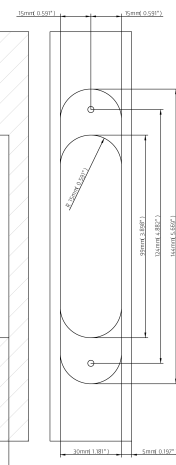
## AN 172 3D

Preform routing with 1/2" cutter and 1" collar ring

Milling frame



Milling door



## AN 161 3D FVZ 14/40

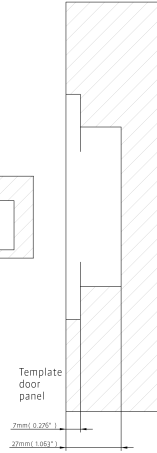
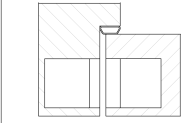
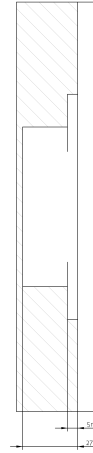
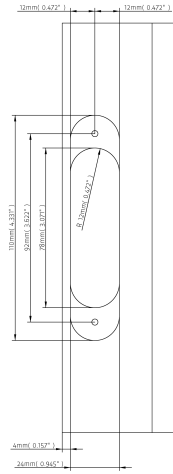
Preform routing with 1/2" cutter and 1" collar ring

# Routing data

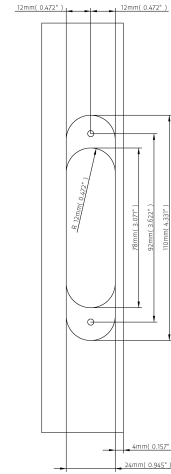
## AN 160 3D

Preform routing with 1/2" cutter and 1" collar ring

Milling frame



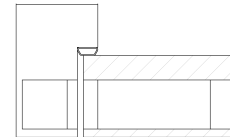
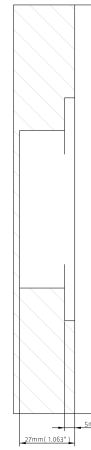
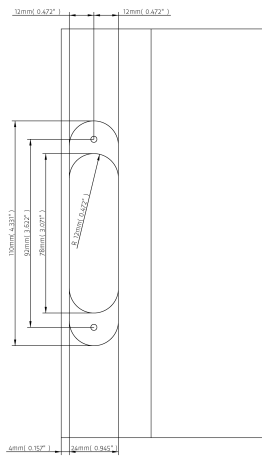
Milling door



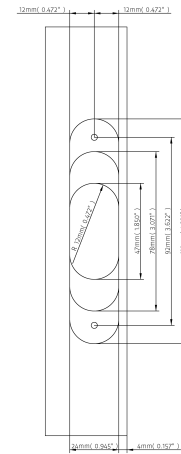
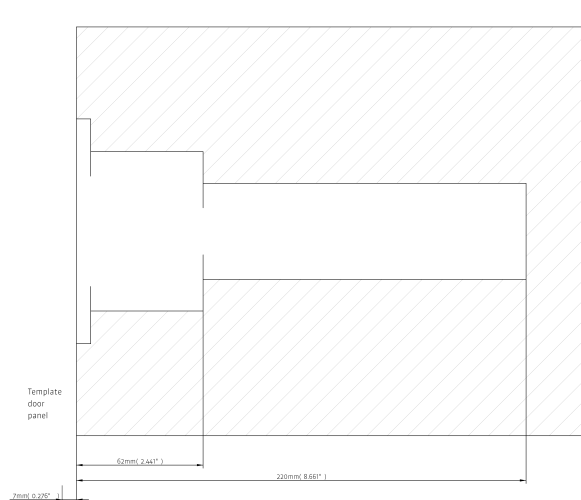
## AN 108 3D SC45

Preform routing with 1/2" cutter and 1" collar ring

Milling frame



Milling door



## Application Accessories

---

### Universal single milling frame

To use with routing templates



---

accessories

### Universal triple milling frame

To use with routing templates



---

accessories



## Application Accessories

### Template double

for precise routings in conjunction with ANSELMi jig technique

accessories	
<b>Technical details</b>	
cutter diameter	12.7 mm (1/2")
collar ring diameter	25.4 mm (1")
<b>Combination</b>	
hinge	AN 170 3D AN 172 3D AN 161 3D FVZ 14/40

#### Note

All indicated dimensions of angle and rail are just standards which may vary on the actual measurements depending on the construction. Where applicable, a trial routing is recommended. Please specify the exact hinge with your order.



### Template single

for precise routings in conjunction with ANSELMi jig technique

accessories	
<b>Technical details</b>	
cutter diameter	12.7 mm (1/2")
collar ring diameter	25.4 mm (1")
<b>Combination</b>	
hinge	AN 160 3D

#### Note

All indicated dimensions of angle and rail are just standards which may vary on the actual measurements depending on the construction. Where applicable, a trial routing is recommended. Please specify the exact hinge with your order.



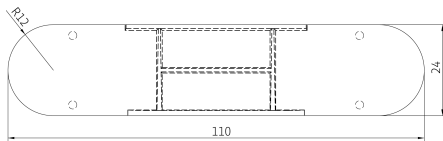
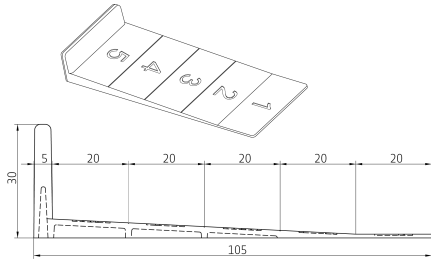
## Accessories

---

### Door height adjustment wedge

Tool for door height adjustment 1 mm (0.039") up to 5 mm (0.196")

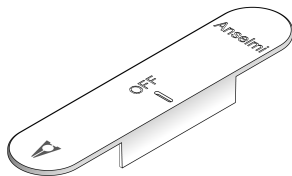
---



### Disposable/varnishable frame hole cover

to protect the hinge seat during the installation of the frame

---



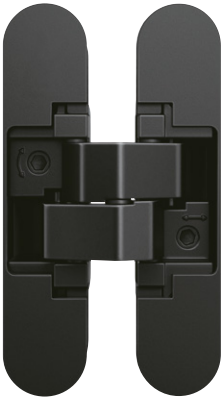
#### Note

Recommended to cover the route on the frame during construction when the door panel has not been installed.

## Finishes

---

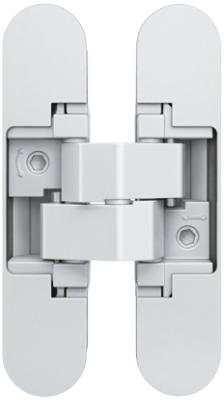
Please note: The colors of the finishes shown may differ from the original.  
More finishes upon request.



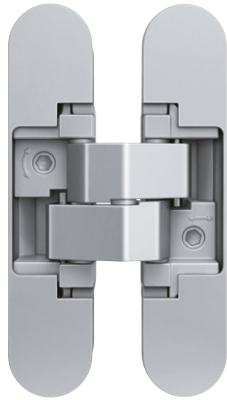
Black  
(AN 018)



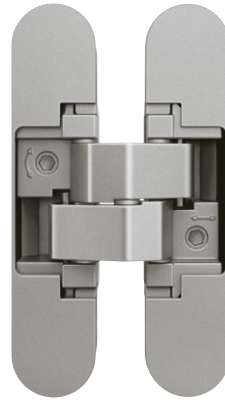
Rustic Umber  
(AN 012)



RAL 9016  
Traffic White  
(AN 049)



Aluminum Chrome  
(AN 036)



Satin Nickel Coated  
(AN 044)



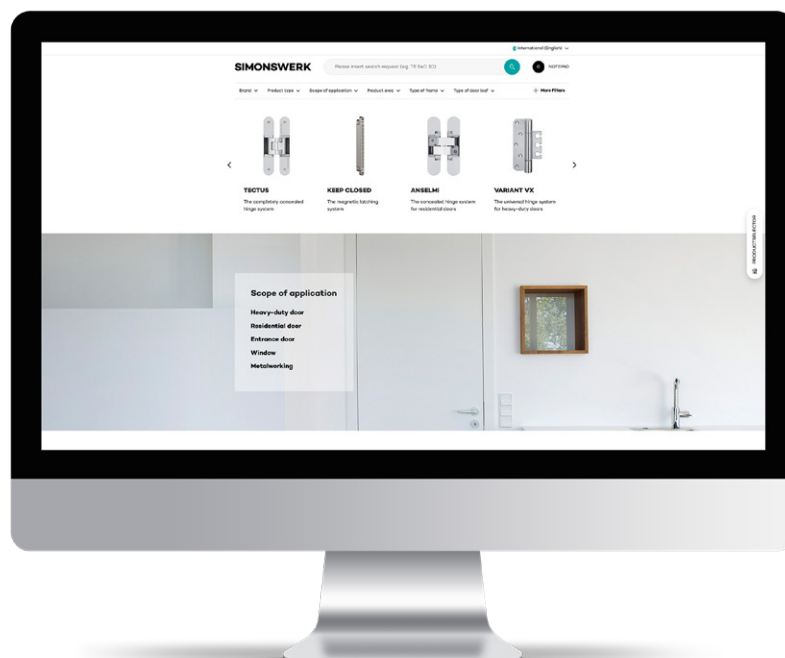
# Service – comprehensive expertise for your daily work

We are happy to provide you with all the documentation you need to determine the most suitable hinge system for your building project. We would be delighted to work with you to choose the best solution – from high-quality standard elements right up to the most complex solutions. Please do not hesitate to contact us.

All our brochures and data sheets can be requested in a printed version, or you can simply download them on the spot on our website.

Our friendly and knowledgeable application engineers will be pleased to help you and advise you.

[www.simonswerk.us](http://www.simonswerk.us)



# SIMONSWERK

## ANSELMI

The concealed hinge system for residential doors

### **SIMONSWERK North America, Inc.**

1171 Universal Boulevard  
Whitewater, WI 53190  
U.S.A.

☎ +1 (262) 472-9500

✉ [info@simonswerk.com](mailto:info@simonswerk.com)

[www.simonswerk.us](http://www.simonswerk.us)

Member of the

**SIMONSWERK  
GROUP**